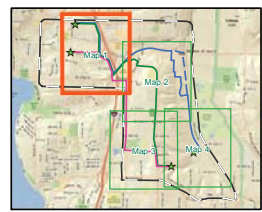


Note: These route alternatives have been developed by PSE and the Stakeholder Advisory Group. A final alignment will be selected after public review and further studies are completed.

- Alternative 1
- Alternative 2
- Alternative 3
- - - - Alternative 3 Fallback
(If desired Alignment is not Achievable)

- Project Study Area Boundary
- PSE Owned Property
- Route End Point



Sammamish - Juanita 115kV Line




Stakeholder Advisory Group
Recommended Route Alternatives
As of May 16, 2012

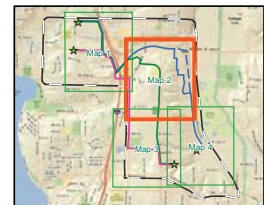




Note: These route alternatives have been developed by PSE and the Stakeholder Advisory Group. A final alignment will be selected after public review and further studies are completed.

- Alternative 1
- Alternative 2
- Alternative 3
- - - Alternative 3 Fallback
(If desired Alignment is not Achievable)

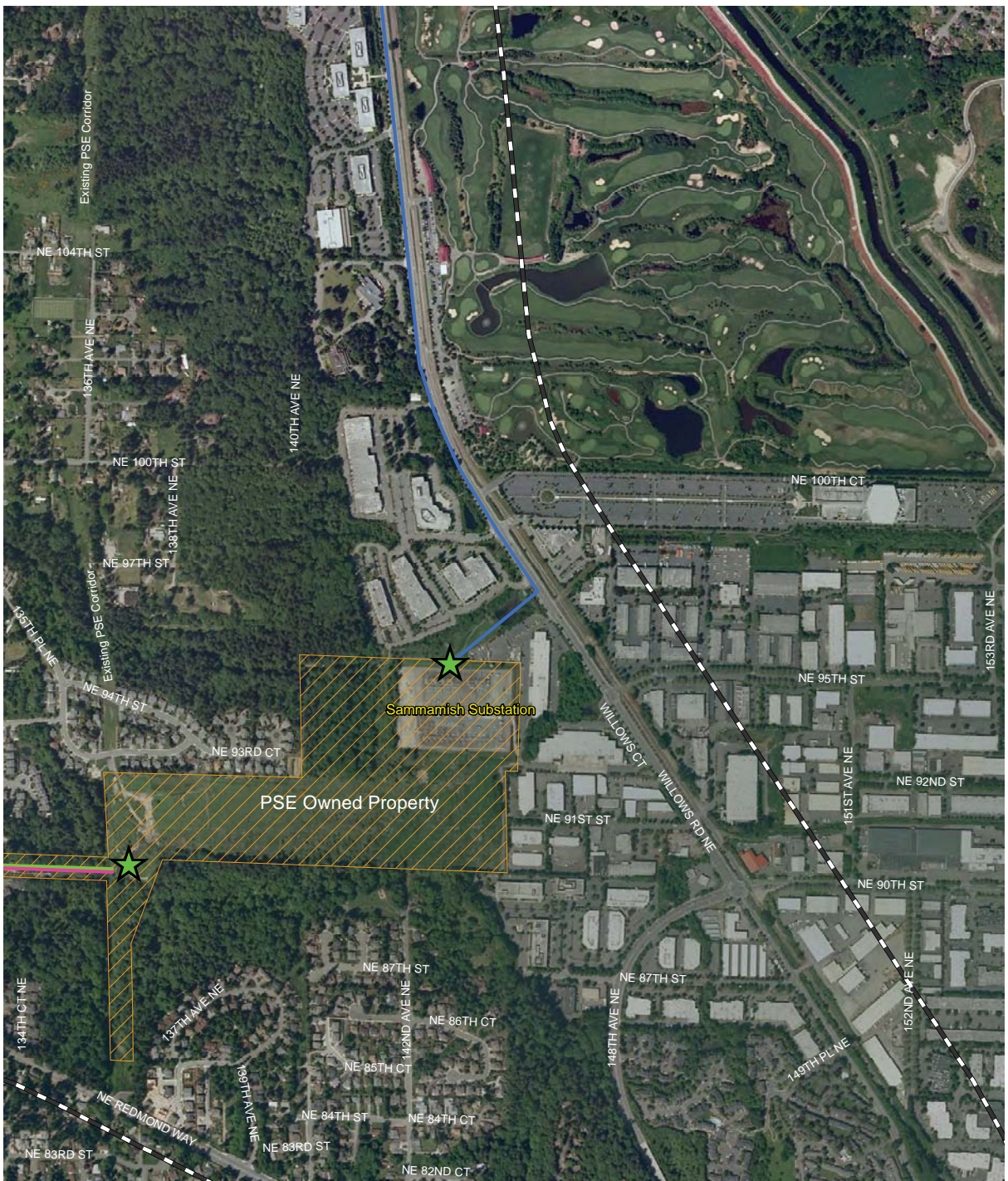
-  Project Study Area Boundary
-  PSE Owned Property
-  Route End Point



Sammamish - Juanita 115kV Line




Stakeholder Advisory Group
Recommended Route Alternatives
As of May 16, 2012

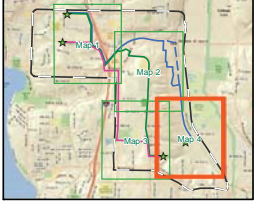




Note: These route alternatives have been developed by PSE and the Stakeholder Advisory Group. A final alignment will be selected after public review and further studies are completed.

- Alternative 1
- Alternative 2
- Alternative 3
- - - Alternative 3 Fallback
(If desired Alignment is not Achievable)

-  Project Study Area Boundary
-  PSE Owned Property
-  Route End Point



Sammamish - Juanita 115kV Line

Stakeholder Advisory Group
Recommended Route Alternatives
As of May 16, 2012

